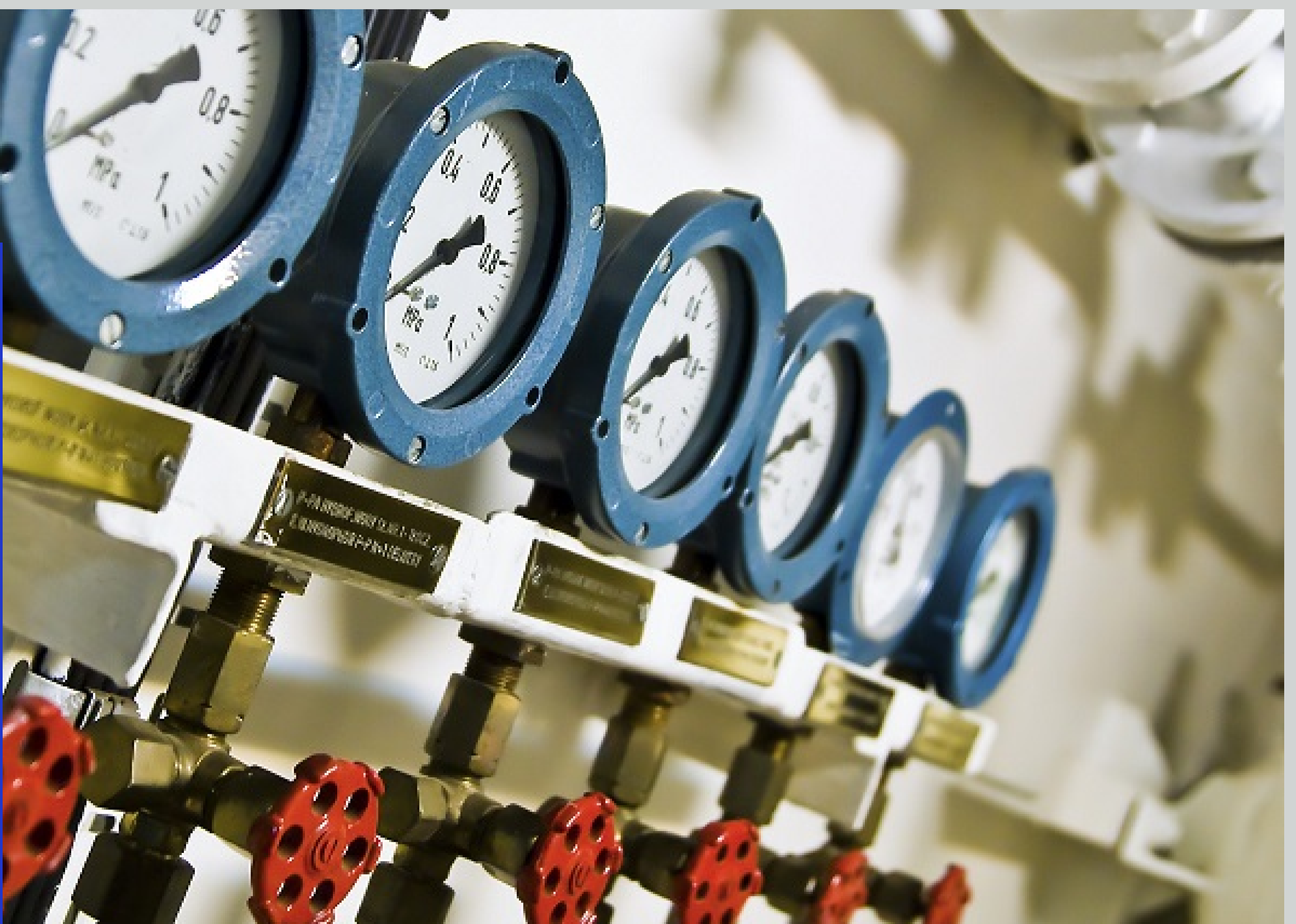


# BOILER & MACHINERY ENGINEERING VS. JURISDICTIONAL BOILER & PRESSURE VESSEL INSPECTIONS

Exploring the differences between TÜV SÜD GRC's Boiler and Machinery Engineering services and TÜV SÜD ARISE's Jurisdictional Boiler & Pressure Vessel Inspections

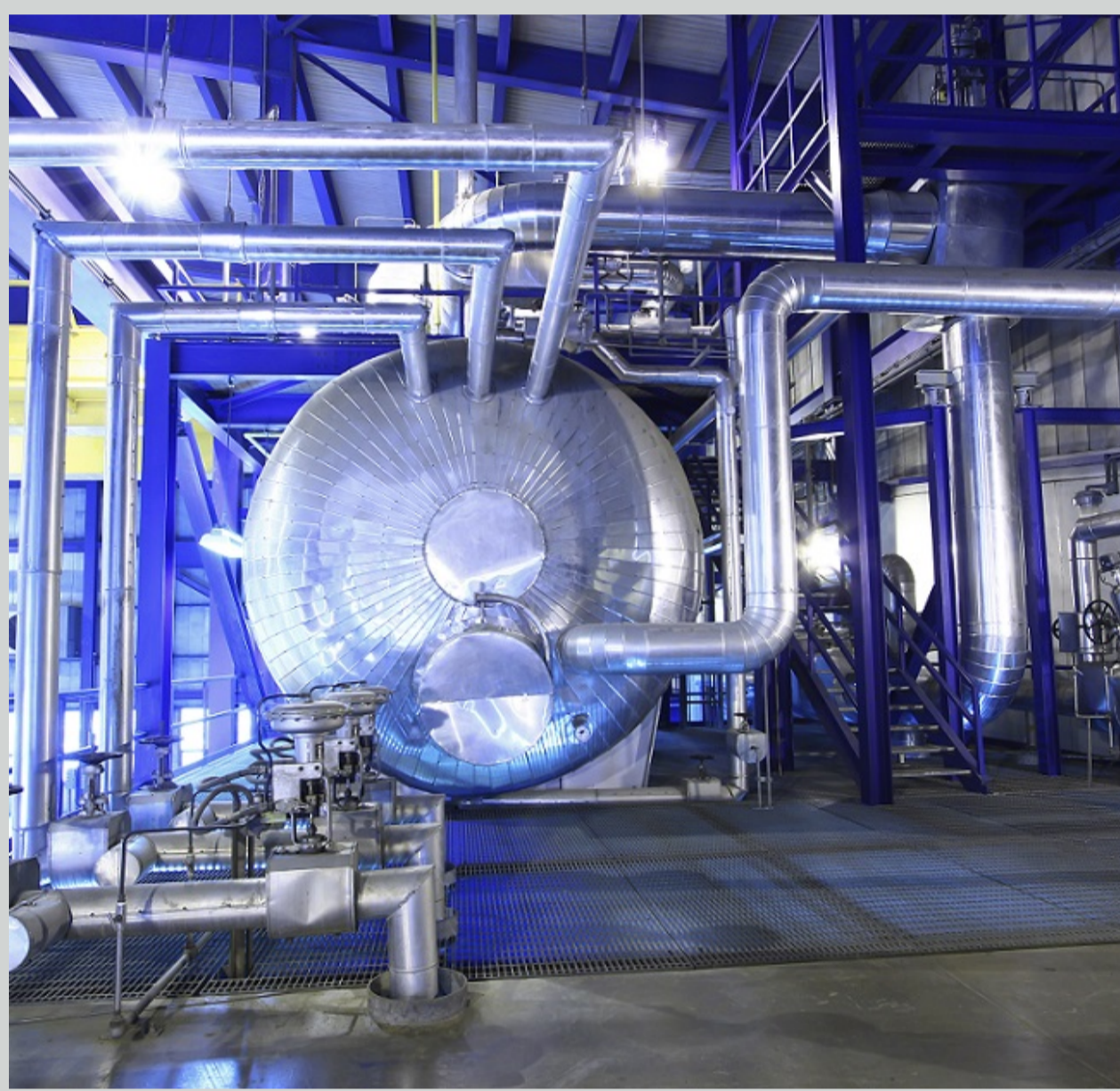
## JURISDICTIONAL BOILER & PRESSURE VESSEL INSPECTIONS

TÜV SÜD ARISE inspections verify that boilers and pressure vessels are constructed, installed and operated in a manner that meets established codes and regulations. These inspections seek to verify that the equipment is properly maintained and will operate safely.



The ultimate goal of TÜV SÜD ARISE inspections are to minimize loss of life and property through the accepted construction and fabrication, as well as the safe operation and maintenance of boilers and pressure equipment.

## BOILER & MACHINERY ENGINEERING

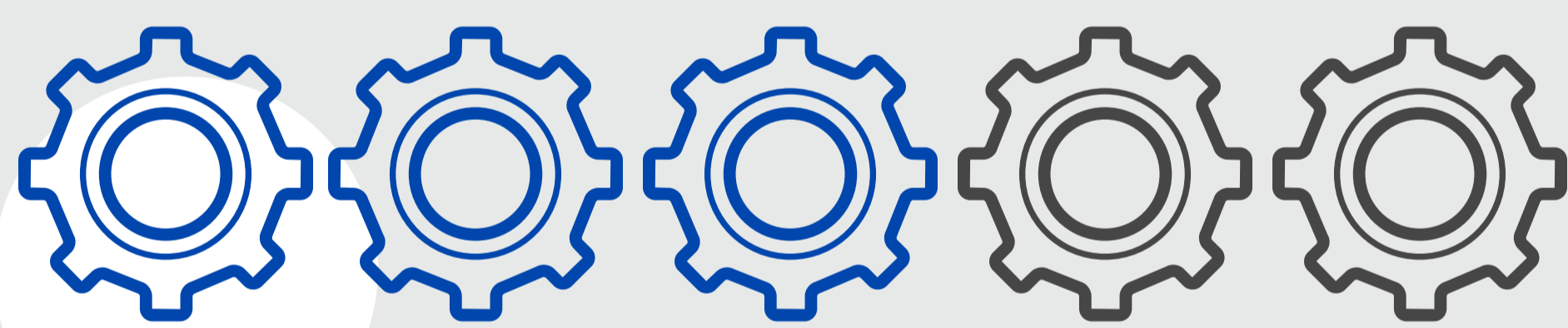


TÜV SÜD GRC's Boiler and Machinery experts not only inspect boilers and pressure vessels, but they also evaluate the mechanical, electrical and production machinery assets of the facility. The asset failure can lead to physical (property) damage and business interruption.

The ultimate goal of these inspections and evaluations is to minimize the loss of property and production through the accepted construction and fabrication, as well as the safe operation and maintenance of boiler/pressure, production machinery, mechanical and electrical equipment.

Inspections are conducted to established codes, standards, guidelines, OEM recommendations, and industry best practices.

### TÜV SÜD ARISE



#### JURISDICTIONAL BOILER & PRESSURE VESSEL INSPECTIONS

- Conducts jurisdictional/statutory required inspections of boilers and pressure vessels
- New construction inspections for compliance with construction codes (ASME, PED, etc.)
- Inspection of in-service repairs for compliance with repairs codes (NBIC)
- Consulting for Quality Control of welding, NDE, metallurgy
- Inspections for compliance with MSHA, DOT, ASME, PED and IBR
- Training on ASME Boiler and Pressure Vessel and National Board Inspection Codes
- Training on boiler maintenance and operations
- Documentation and tracking of certificates and violations/recommendations

### TÜV SÜD GRC



#### BOILER & MACHINERY ENGINEERING

- Conducts loss prevention evaluations of industrial mechanical and electrical systems
- Monitor the exposure to reduce identified risks
- Analyze production, processes, and utility systems for risks and exposures
- Make recommendations to avert equipment failures
- Reference mechanical codes and electrical standards
- Evaluate integrity programs and NDE efforts
- Evaluate preventative and predictive maintenance programs
- Industrial control system vulnerability assessment
- Boiler operation and maintenance seminars

*Learn more about Boiler & Machinery Engineering*

*Learn more about Jurisdictional Boiler & Pressure Vessel Inspections*



Add value.  
Inspire trust.



Global Risks  
Consultants®