



## Contact us for more information

[www.tuvsud.com/lifts-and-escalators](http://www.tuvsud.com/lifts-and-escalators)  
[liftsandcranes@tuvsud.com](mailto:liftsandcranes@tuvsud.com)

### Add value. Inspire trust.

TÜV SÜD is a trusted partner of choice for safety, security and sustainability solutions. It specialises in testing, certification, auditing and advisory services. Since 1866, the company has remained committed to its purpose of enabling progress by protecting people, the environment and assets from technology-related risks. Through more than 24,500 employees across over 1,000 locations, it adds value to customers and partners by enabling market access and managing risks. By anticipating technological developments and facilitating change, TÜV SÜD inspires trust in a physical and digital world to create a safer and more sustainable future.

TÜV SÜD Asia Pacific Pte. Ltd.  
1 Science Park Drive  
Singapore 118221  
[www.tuvsud.com/lifts-and-escalators](http://www.tuvsud.com/lifts-and-escalators)

### Benefits of TÜV SÜD's Lift Manager solution



Minimise lift failures with operational data



Ensure lift safety



Reduce lifecycle costs by avoiding premature alterations or replacement works



Improve overall productivity in lift management and operations



Add value.  
Inspire trust.

## Lift Manager

Ensuring lift reliability through digital technologies



## The Lift Manager is an end-to-end IoT solution, giving building owners control over their lift operations and maintenance.

Maintenance issues represent an ongoing challenge for building owners. This is especially true regarding lifts, for which the lack of timely information on the lifts' performance and condition or skilled professional in lift maintenance can lead to service outages and inconvenience for occupants. An initial diagnosis of the problem is often based on incomplete information received from tenants or building occupants themselves. The quality of such information often makes it impossible for the building owner to accurately validate the actual cause of the failure, assess the extent of service required, or the costs required to maintain the lifts. Furthermore, lift operators are unsure of which predictive maintenance is required to ensure safe and reliable lifts.

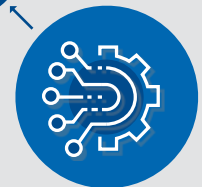
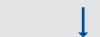
Today's advanced digital technologies can streamline the operation and maintenance of lifts while increasing lift reliability. Smart devices such as sensors can collect and transmit vital operational information that increase the transparency of essential data regarding lift operations. With this data which is based on the operational parameters of their lifts, building owners can ensure cost-effective measures by identifying potential maintenance issues in advance.

Building owners can also minimise costs incurred from urgent maintenance or procurement of lift parts due to failures, thus allowing a more effective management of the total operation costs.

TÜV SÜD's team of lift and analytics experts is equipped to help building owners and maintenance staff apply smart technologies to the task of smooth and reliable lift management and operations.

### Our Lift Manager solution includes

Sensor kits for monitoring basic lift information and predictive maintenance solution



Provide algorithms based on our analytic engines

Data used for scheduling routine maintenance